

# Port to Renewable Energy Zones construction update

## Central-West Orana REZ

Notification | April 2026

### Night work notification

EnergyCo is continuing construction on the Port to REZ project. As part of this work, night work is required at two intersections on the Golden Highway, at Whittingham and Jerrys Plains.

We are delivering upgrades along the state roads network to enable the delivery of oversize over mass (OSOM) equipment needed to build renewable energy zones across NSW and leave improved roads for the whole community.

BMD Constructions will carry out the first stage of work at 19 locations between the Port of Newcastle and Elong Elong, unlocking access to the Central-West Orana Renewable Energy Zone (REZ).

### What are we doing?

From late April 2025 until mid-2026, we will be working at multiple locations along the route.

Work will continue at the intersections of;

- **New England Highway/Mitchell Line of Road (Golden Highway), Whittingham** and will include **one night shift in April** to complete line marking on the road
- **Golden Highway/Lonsdale Street/Pagan Street, Jerrys Plains**, and will include **two night shifts in April** to complete line marking on the road.

### Work hours and timing

To reduce the impacts on traffic and ensure the safety of workers and motorists, work will be completed over a total of **three night shifts in April 2026**. The night shifts will be scheduled between **Sunday to Thursday, 6pm to 7am**, weather permitting. Any affected residents will be contacted directly.

### What will this mean for you?

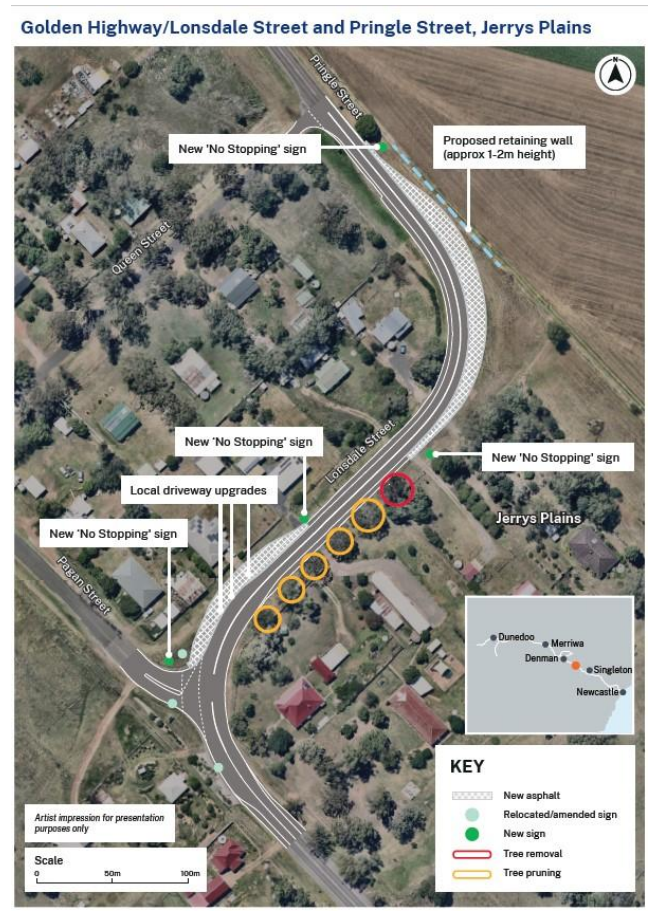
During the works there will be traffic control, temporary lane closures and machinery operating adjacent to, or on the road.

Lane closures will vary as the works progress. Access for road users will be maintained. We will make every effort to minimise noise and vibration impacts by turning off equipment when not in use and monitoring noise.

Please observe speed limits, follow the directions of traffic controllers and signs, plan ahead and allow extra travel time.

For the latest updates, visit [www.livetraffic.com](http://www.livetraffic.com) or call 132 701. Thank you for your patience during this important work.

## Location of the work



## About EnergyCo

The Energy Corporation of NSW (EnergyCo) is a statutory authority responsible for leading the delivery of Renewable Energy Zones (REZs) as part of the NSW Government's Electricity Infrastructure Roadmap. EnergyCo is working closely with communities, investors and industry to deliver the state's first five REZs.

For more information about EnergyCo, visit our website at [energyco.nsw.gov.au/about-energyco](http://energyco.nsw.gov.au/about-energyco).

## Contact us

For more information, please visit our website or get in touch with our team.

 [Port2REZCommunity@BMD.com.au](mailto:Port2REZCommunity@BMD.com.au)

 1800 807 561

 [Energyco.nsw.gov.au/port2rez](http://Energyco.nsw.gov.au/port2rez)



If you need help understanding this information, please contact the Translating and Interpreting Service on 131 450 and ask them to call us on 1800 807 561.