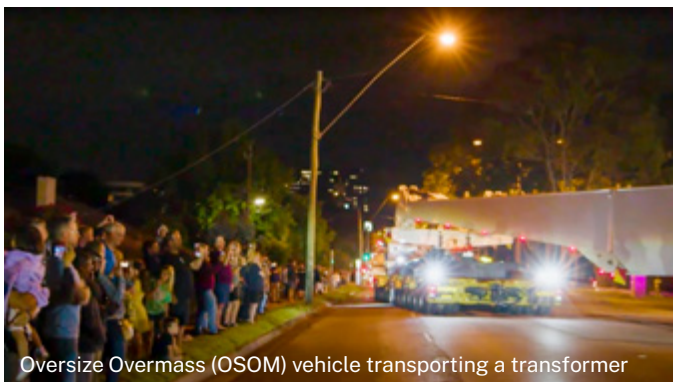


Traffic and transport impact assessment

Hunter Transmission Project

Environmental Impact Statement | Fact Sheet | September 2025

The Hunter Transmission Project (the project) is a key part of securing NSW's energy future. It will deliver a new 110-kilometre overhead 500 kilovolt (kV) transmission line from Bayswater (near Muswellbrook) to Olney (near Eraring), connecting into the State's 500 kV network.



This link will unlock renewable generation from the Central-West Orana and New England Renewable Energy Zones, allowing it to flow into the electricity grid where and when it is needed. By strengthening this part of the network, the project will help keep power affordable and ensure reliable supply as coal-fired power stations retire.

What is an environmental impact statement?

The environmental impact statement (EIS) is a detailed report EnergyCo must prepare so government can assess whether the Hunter Transmission Project should proceed. As critical State significant infrastructure, NSW law requires an EIS to assess potential effects on the environment, communities, and the economy — and explain how negative impacts will be avoided, reduced, or managed, and how benefits will be maximised. The EIS is placed on public exhibition so the community, government agencies, and other stakeholders can review the findings, ask questions and provide feedback. This process ensures transparency, considers all views and helps the government decide whether the project should proceed. Final approval rests with the NSW Minister for Planning and Public Spaces and the Australian Minister for the Environment and Water.



Proposed construction route – Golden Highway/Putty Road, Mt Thorley

Traffic and transport

Assessment Findings

The Hunter Transmission Project corridor runs through a mix of rural and regional areas, connecting key substations and crossing multiple local government areas (LGAs). The project intersects with national highways, State, regional and local roads, rail crossings, and private access tracks.

Given this diverse landscape, it is important to understand how construction and operation may affect the transport network, and how these impacts can be minimised.

As part of the project's environmental impact statement (EIS), the project completed a comprehensive traffic and transport impact assessment to assess:



Current road and transport conditions – capacity, safety records, and traffic volumes.



Construction traffic impacts – how workers, materials, and equipment will be transported.



Cumulative impacts – where other nearby projects could add to traffic volumes.



Safety controls – measures to keep road users, workers, and the community safe.

Planning, maintenance and communication

A Traffic Management Plan will be developed in consultation with councils and Transport for NSW to manage construction traffic, safety measures and community communication. If alternative routes are identified during detailed design, they will be assessed and approved before use. The project will carry out road condition surveys before and after construction, and any damage caused by project activities will be repaired in agreement with the relevant road authority.

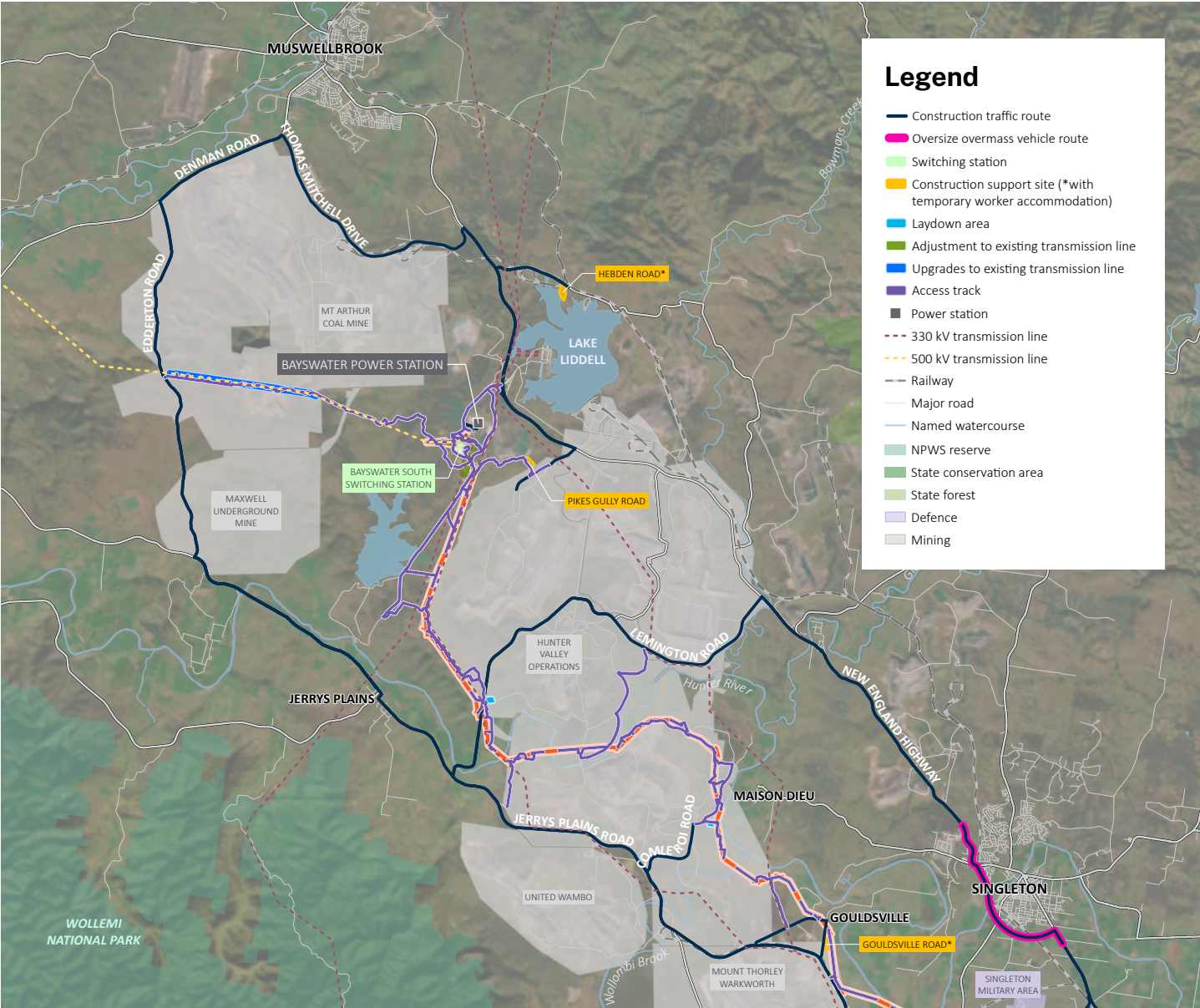
To keep the community informed, the project will provide:

- roadside signage and traffic alerts
- direct notices to residents, businesses and landowners
- early notifications to emergency services, freight operators and public transport providers.

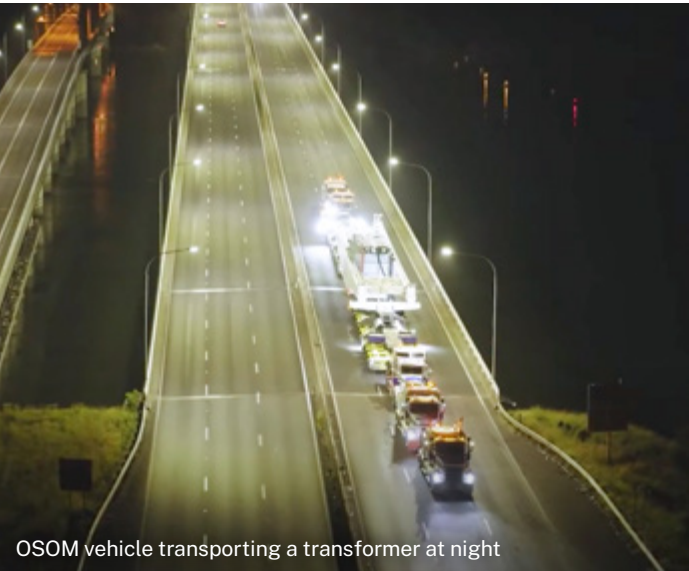
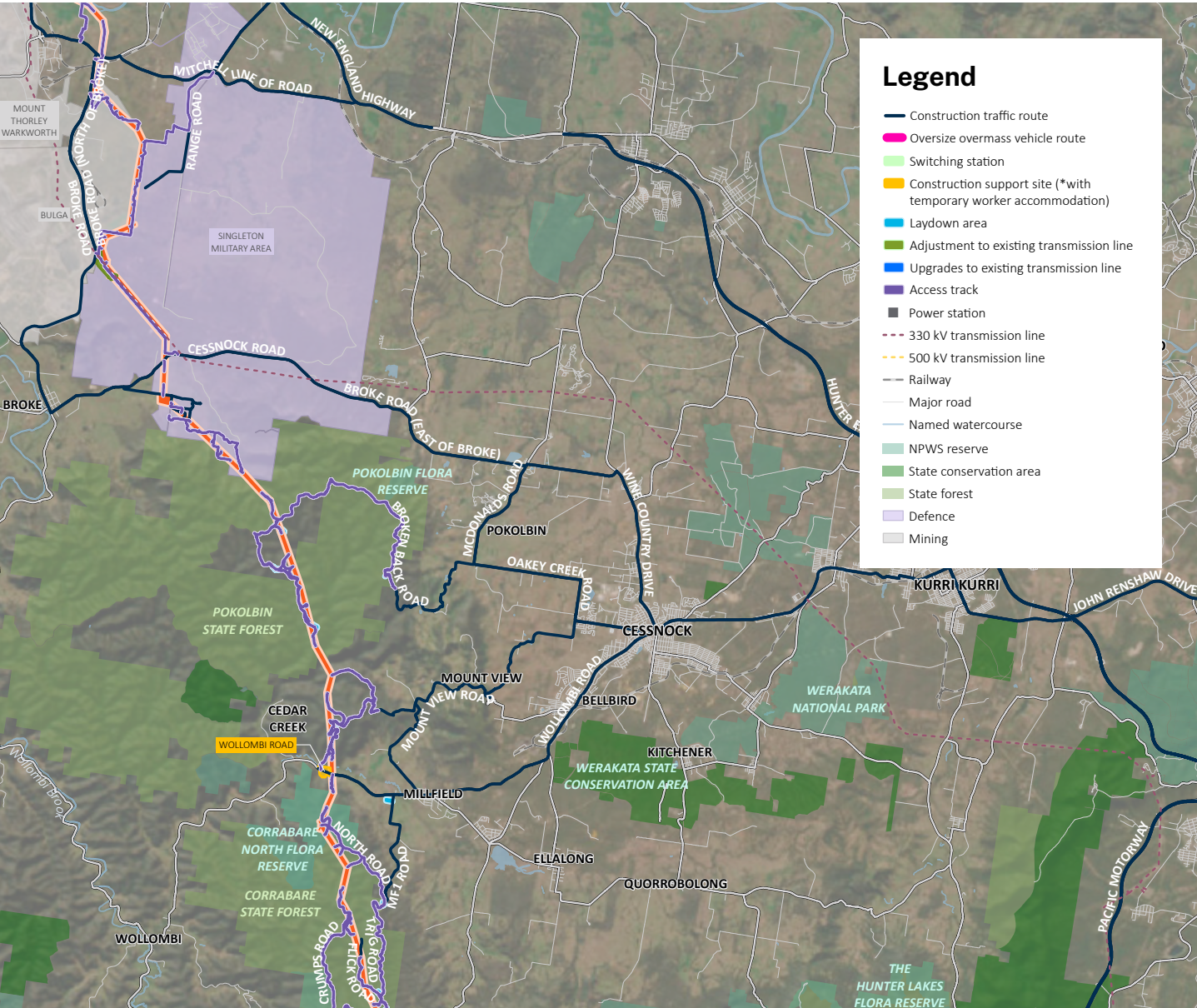
Through careful planning, collaboration with authorities, and open communication, the project will be delivered while keeping local roads safe, accessible and in good condition.



Construction Routes 1



Construction Routes 2



Keeping roads safe during construction

During construction, there will be more traffic on local roads as:



Heavy vehicles transport equipment, towers and conductors



Oversize vehicles deliver specialist items such as transformers



Workers travel to and from temporary accommodation and work sites, particularly during shift change times.

To reduce impacts, the project will:

- prioritise use of major arterial roads
- schedule deliveries outside peak hours.

While some local roads may see more traffic during works, assessments show that road capacity will remain largely the same as current conditions.

The project will manage safety by:

- following Austroads Guides and Transport for NSW standards
- using temporary speed limits, clear signage and traffic control where needed
- providing advance community notification before any major traffic changes including proposed road upgrades where required to maintain safety and traffic flow.

Once operational, traffic will be minimal — mostly limited to occasional maintenance visits with negligible impacts on the road network.

Temporary closures and access changes

Some works, such as stringing transmission lines over roads or moving large loads, may require temporary lane closures or detours.

These will be:

- approved by the relevant road authority in advance.
- scheduled outside peak times where possible.
- supported by clear detour signage and early community updates.



Proposed construction route – Cessnock Road, near Singleton Military Area

Stay informed and have your say

The Hunter Transmission Project EIS is on public exhibition from 27 August to 24 September 2025. You can:

- Read the full EIS, including **Chapter 11** for Transport and traffic assessment, mitigation measures, and management plans, on the NSW Planning Portal.
- Contact the project team at any time, including during the public exhibition period:
 - **Email:** htp@energyco.nsw.gov.au
 - **Call:** 1800 645 972 (9am to 5pm, Monday to Friday)
 - **Visit:** energyco.nsw.gov.au/htp

Make a submission

You can provide feedback on the Hunter Transmission Project Environmental Impact Statement (EIS) during the exhibition period.

By post

Send to: Director –Energy Assessments, Department of Planning, Housing and Infrastructure, Locked Bag 5022, Parramatta NSW 2124

Your submission should include:

- Your name and address (can request to be withheld)
- Application name: Hunter Transmission Project
- Application number: SSI-70610456
- A short statement on whether you support, object, or want to comment on the proposal
- Reasons or supporting information for your views



Online

Visit the NSW Planning Portal at planningportal.nsw.gov.au/major-projects/have-your-say → search 'Hunter Transmission Project' → click 'Make a submission'

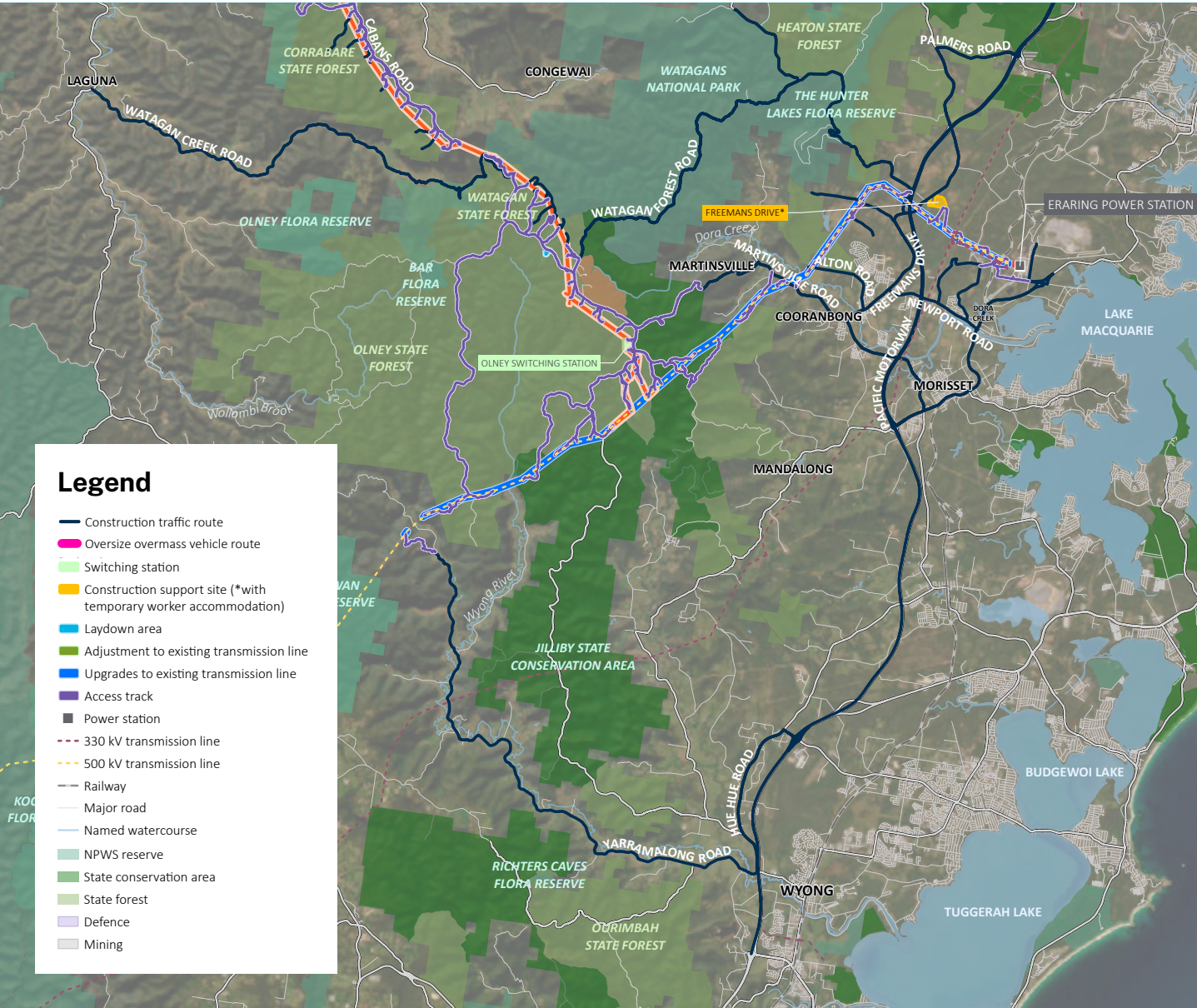
For more details, visit the NSW Planning Portal at planningportal.nsw.gov.au/major-projects/have-your-say

Submission criteria

- A submission on the Hunter Transmission Project must include the Application number SSI-70610456.
- A submission must include your full name and address.
- You can request to have your name withheld
- A submission must be signed
- A submission must include a statement on whether you support, object, or are providing comments on the issues raised in the EIS
- A group submission signed by one person is considered a single submission
- Where relevant, provide reasons and/or supporting information for any conclusions made in the submission
- Submissions can be made by an individual or a group. If there is new information that should be considered, provide supporting documents
- An effective submission considers the purpose of environmental impact assessment and refers to a relevant issue or key matter in the EIS



Construction Routes 3



About EnergyCo

The Energy Corporation of NSW (EnergyCo) is a statutory authority responsible for leading the delivery of Renewable Energy Zones (REZs) as part of the NSW Government's Electricity Infrastructure Roadmap.

EnergyCo is working closely with communities, investors and industry to deliver the state's five REZs.

For more information about EnergyCo, visit our website at energyco.nsw.gov.au/about-energyco.

Contact us

For more information about the Hunter Transmission Project, you can visit our website or contact the project team.



htp@energyco.nsw.gov.au



1800 645 972 (9am to 5pm, Monday to Friday)



energyco.nsw.gov.au/htp



If you need help understanding this information, please contact the Translating and Interpreting Service on **131 450** and ask them to call us on **1800 645 972**.

