

Port to Renewable Energy Zones construction update

Proposed pullover bay in Jerrys Plains

June 2025

EnergyCo is constructing new pullover bays as part of the first stage of road upgrades from the Port of Newcastle to the Central-West Orana Renewable Energy Zone (REZ), as part of the Port to Renewable Energy Zones Program.

We are delivering upgrades along the State Road network to enable the delivery of oversize over mass (OSOM) equipment needed to build renewable energy zones across NSW and leave improved roads for the whole community.

BMD Constructions will carry out the first stage of work at 19 locations between the Port of Newcastle and Elong Elong, unlocking access to the Central-West Orana Renewable Energy Zone.

Pullover bays

New pullover bays form part of the first stage of the road upgrades. One of these proposed pullover bays is in Jerrys Plains.

Pullover bays provide safe locations for OSOM vehicles to pull over and let other vehicles pass.

Proposed Jerrys Plains pullover bay

The proposed pullover bay in Jerrys Plains will be located on the northbound side of the Golden Highway, north of the BP Service Station, in an area already informally used by vehicles to stop.

At this location OSOM vehicles will be able to pull over and allow motorists to pass.

The pullover bay will be asphalted and will tie into the highway.

Community drop-in session

We are hosting a community drop-in session with Transport for NSW to update the community about the pullover bays and the progress of the road upgrades. We will also provide an update about the Hunter Transmission Project.

When: 5pm – 7pm, Thursday 3 July 2025

Where: Jerrys Plains School of Arts Hall, Wambo Street, Jerrys Plains

Managing our impacts

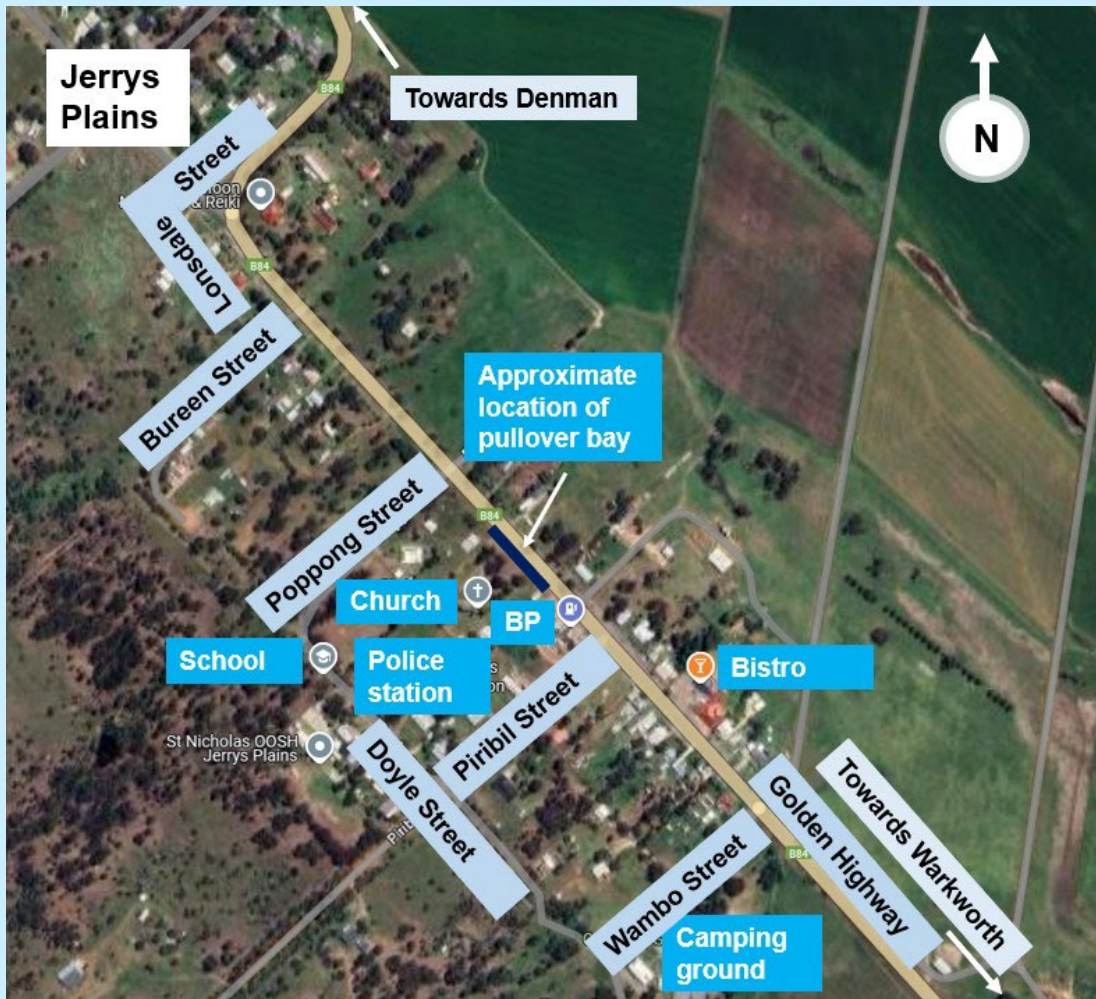
Noise and traffic impacts related to the road upgrades in Jerrys Plains is expected to be minimal. Access to properties will be maintained.

Please take care, keep to the signposted speed limits and follow the direction of traffic controllers.

We will make every effort to minimise noise and vibration impacts by turning off equipment when not in use and monitoring noise.

Thank you for your patience during the work.

Proposed Jerrys Plains pullover bay



Pulllover bay location: (Above) The map shows the approximate location of the pullover bay, located west of the BP petrol station on the Golden Highway. (Below) A photo of the pullover bay location.



Contact us

For more information, get in touch with our team:

📞 1800 807 561
(9am to 5pm, Monday to Friday)

✉ Port2REZCommunity@BMD.com.au

Visit our website to read our work notifications or view our interactive map:

🌐 www.energyco.nsw.gov.au/port2rez

📍 <https://caportal.com.au/energyco/rez>



131 450

If you need the Translating and Interpreting Service call 131 450 and ask them to call us on 1800 807 561.