

Port to Renewable Energy Zones construction update

Early works and site compounds

June 2025

EnergyCo has established two site compounds as work begins on the road upgrades from the Port of Newcastle to the Central-West Orana Renewable Energy Zone.

We are delivering upgrades along the State-Road network to enable the delivery of oversize over mass (OSOM) equipment needed to build renewable energy zones across NSW and leave improved roads for the whole community.

BMD Constructions will carry out the first stage of work at 19 locations between the Port of Newcastle and Elong Elong, unlocking access to the Central-West Orana Renewable Energy Zone.

What are we doing?

Early works started in May at six locations: Mayfield North, Jerrys Plains, Sandy Hollow, Birriwa, Cassilis and Elong Elong.

Early works will start at the remaining eight locations (**Buchanan, Whittingham, Mt Thorley, Denman, Muswellbrook, Leadville, Dunedoo, and Cobbora**) from mid-June, and will include:

- Geotechnical investigations including potholing and survey work
- Installing traffic signs, flags around work zones and environmental controls

Site compounds

Site compounds have been established at each end of the Port to REZ route. Each site has a shed for around 10 staff and includes meeting rooms, amenities, fences, security, and parking.

East Compound – Newcastle

- Located at Roll Shop Road, near the intersection of Industrial Drive and Selwyn Street, Mayfield.

West Compound – Birriwa

- Located near the intersection of Barneys Reef Road and Castlereagh Highway, Birriwa.

See site compound locations over the page.

Work hours and timing

Standard work hours are **7am and 6pm, Monday to Friday**, and **8am to 1pm, Saturdays**.

To ensure the safety of our crews and motorists, some night work may also occur. **If required, night work hours will be from 6pm to 7am, Sunday to Thursday.** Any affected residents will be contacted directly.

What will this mean for you?

During the works there will be traffic control, temporary lane closures and machinery operating adjacent to, or on the road.

Lane closures will vary as the works progress. Access for road users will be maintained.

Please take care, keep to the signposted speed limits and follow the direction of traffic controllers.

We will make every effort to minimise noise and vibration impacts by turning off equipment when not in use and monitoring noise.

Thank you for your patience during this important work.

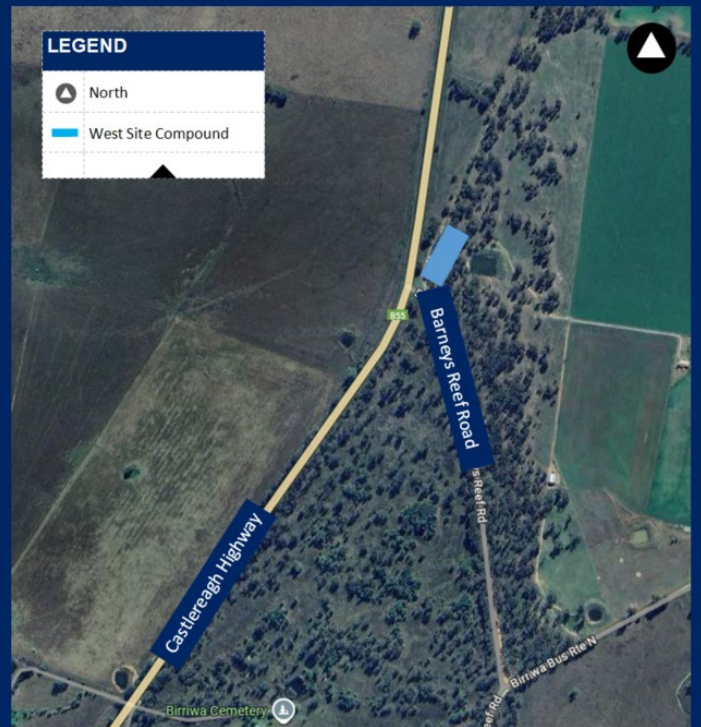
Site compound locations

East Compound—Roll Shop Road, Mayfield



This is an artist impression only and is not to scale.

West Compound—Barney Reefs Road, Birriwa



This is an artist impression only and is not to scale.

Contact us

For more information, get in touch with our team:

📞 1800 807 561
(9am to 5pm, Monday to Friday)

✉️ Port2REZCommunity@BMD.com.au

Visit our website to read our work notifications or view our interactive map:

🌐 www.energyco.nsw.gov.au/port2rez

📍 <https://caportal.com.au/energyco/rez>



131 450

If you need the Translating and Interpreting Service call 131 450 and ask them to call us on 1800 807 561.