

# Hunter Transmission Project

## HTP South – Olney to Eraring

Project update Autumn 2024

The Hunter Transmission Project is one of the State's most critical energy projects and will help provide clean and reliable electricity to consumers for generations to come.



### Feedback from the Hunter community is helping to shape the HTP

The HTP preliminary corridor was placed on public exhibition in late 2023. Community feedback has helped to refine the corridor to make several improvements, including making it shorter with fewer impacts on people and the environment.

The next step is starting the planning process which includes an environmental impact statement (EIS). We'll continue to engage with the community to look for ways to reduce impacts, manage issues and identify opportunities to benefit the region.

We invite you to continue being part of the conversation.

### HTP at a glance



A new overhead 500 kV double circuit transmission line of around 100 kilometres



Will supply clean energy from the Central-West Orana and New England renewable energy zones (REZs)



To power homes and businesses in the Hunter, Sydney and Illawarra



Urgent and must be operational by 2028



Read our report **Shaping the HTP** on our website [energyco.nsw.gov.au/htp](https://energyco.nsw.gov.au/htp)

### Ongoing engagement in HTP South

As we develop the EIS, we'll provide more information and engage on broader project impacts and benefits, which will include:

- road access and construction traffic
- visual amenity
- biodiversity and environment
- a Hunter-first benefit sharing package.

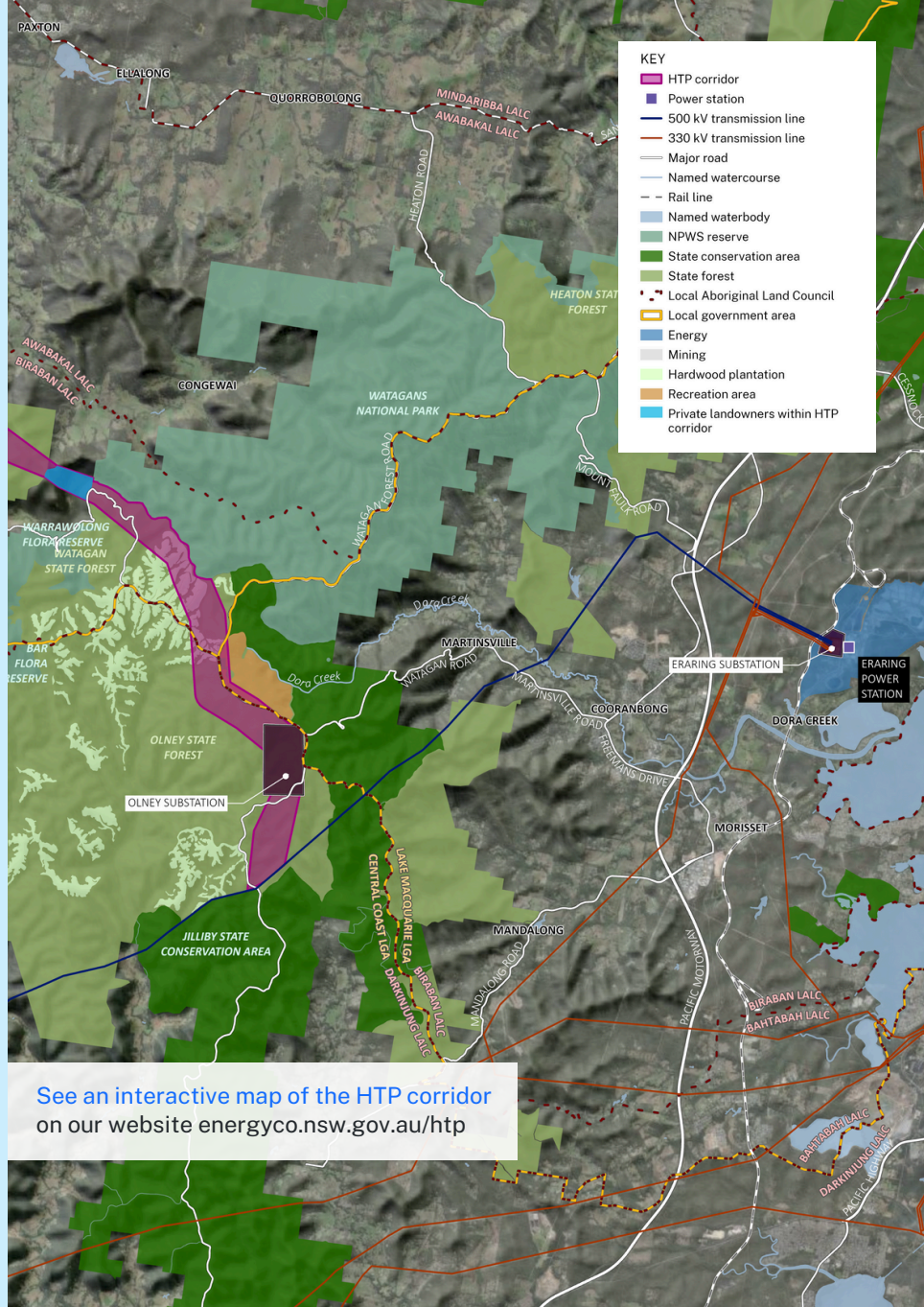
**To get involved, visit our website for the latest information and updates** [energyco.nsw.gov.au](https://energyco.nsw.gov.au)

## What's changed in HTP South?

The revised HTP corridor:

- identifies a new substation on a site in the Olney State Forest (an old commercial timber plantation). This makes it possible to avoid Martinsville and Cooranbong, removing all 32 private landowners from the HTP South corridor
- follows a more direct route to the south so the revised corridor is around 15 kilometres shorter
- does not go through the Jilliby State Conservation Area – and the Watagans National Park remains unaffected.

There'll be temporary workers accommodation constructed in HTP South near Freemans Drive. It will be removed when the HTP is complete. At this stage we expect the total number of workers in HTP South to be around 200 but this may increase.



## Next steps for the HTP

### Update

Report back to the community and start the environmental assessment process

### Investigate and prepare

Develop the HTP's design and prepare an environmental impact statement (EIS)

### Update

Report back to the community for mid-year update

### Seek public feedback

Public exhibition of the EIS

## About EnergyCo

EnergyCo is the NSW Government statutory authority responsible for delivering the HTP as a critical part of transitioning to a cleaner future under the Electricity Infrastructure Roadmap.

You can read more about EnergyCo on our website: [energyco.nsw.gov.au](http://energyco.nsw.gov.au)

## Contact us

- 1800 645 972
- [htp@energyco.nsw.gov.au](mailto:htp@energyco.nsw.gov.au)
- [energyco.nsw.gov.au/htp](http://energyco.nsw.gov.au/htp)



If you need help understanding this information, please contact the Translating and Interpreting Service on 131 450 and ask them to call us on 1800 645 972.