

# Hunter Transmission Project

## HTP Central – Pokolbin to Corrabare

Project update Autumn 2024

The Hunter Transmission Project is one of the State's most critical energy projects and will help provide clean and reliable electricity to consumers for generations to come.



### Feedback from the Hunter community is helping to shape the HTP

The HTP preliminary corridor was placed on public exhibition in late 2023. Community feedback has helped to refine the corridor to make several improvements, including making it shorter with fewer impacts on people and the environment.

The next step is starting the planning process which includes an environmental impact statement (EIS). We'll continue to engage with the community to look for ways to reduce impacts, manage issues and identify opportunities to benefit the region.

We invite you to continue being part of the conversation.

### HTP at a glance



A new overhead 500 kV double circuit transmission line of around 100 kilometres



Will supply clean energy from the Central-West Orana and New England renewable energy zones (REZs)



To power homes and businesses in the Hunter, Sydney and Illawarra



Urgent and must be operational by 2028



Read our report **Shaping the HTP** on our website [energyco.nsw.gov.au/htp](https://energyco.nsw.gov.au/htp)

### Ongoing engagement in HTP Central

As we develop the EIS, we'll provide more information and engage on broader project impacts and benefits, which will include:

- road access and construction traffic
- visual amenity
- biodiversity and environment
- a Hunter-first benefit sharing package.

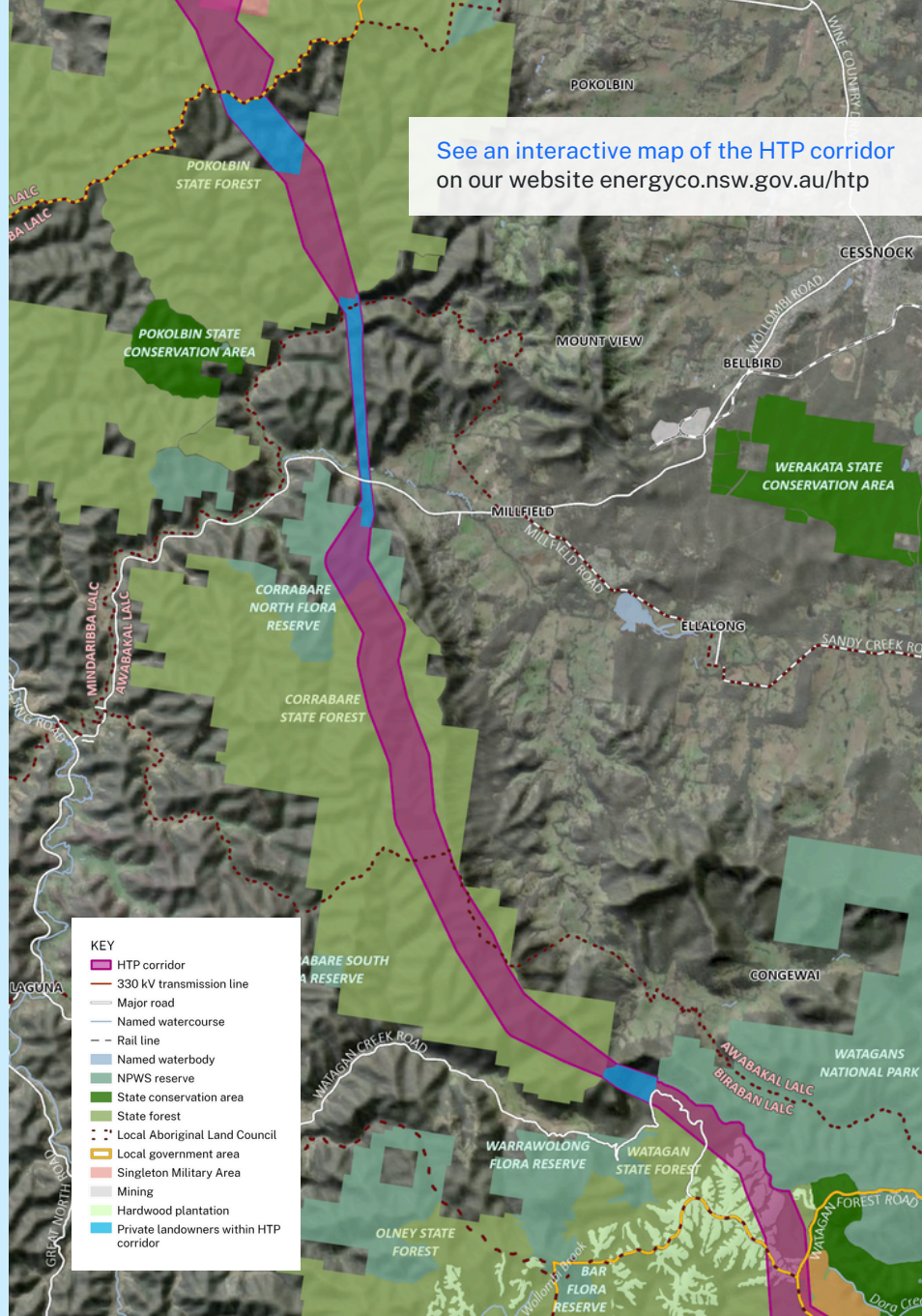
**To get involved, visit our website for the latest information and updates**  
[energyco.nsw.gov.au](https://energyco.nsw.gov.au)

## What's changed in HTP Central?

The revised HTP corridor:

- refines the transmission line corridor through private properties in Cedar Creek, Millfield and Laguna, reducing impacts on landowners
- pushes the corridor further west in the Pokolbin and Corrabare State forests. This will reduce vegetation clearing and minimise impacts on threatened plants and animals, and Aboriginal cultural heritage
- allows for the strategic placement of the transmission line away from the major ridgelines to protect views and minimise visibility of towers.

There'll be temporary workers accommodation at an existing industrial location. It will be removed when the HTP is complete. At this stage we expect the number of workers in HTP Central to be around 150 people but this may increase.



See an interactive map of the HTP corridor on our website [energyco.nsw.gov.au/htp](http://energyco.nsw.gov.au/htp)

## Next steps for the HTP

### Update

Report back to the community and start the environmental assessment process

### Investigate and prepare

Develop the HTP's design and prepare an environmental impact statement (EIS)

### Update

Report back to the community for mid-year update

### Seek public feedback

Public exhibition of the EIS

## About EnergyCo

EnergyCo is the NSW Government statutory authority responsible for delivering the HTP as a critical part of transitioning to a cleaner future under the Electricity Infrastructure Roadmap.

You can read more about EnergyCo on our website: [energyco.nsw.gov.au](http://energyco.nsw.gov.au)

## Contact us

1800 645 972  
[htp@energyco.nsw.gov.au](mailto:htp@energyco.nsw.gov.au)  
[energyco.nsw.gov.au/htp](http://energyco.nsw.gov.au/htp)



If you need help understanding this information, please contact the Translating and Interpreting Service on 131 450 and ask them to call us on 1800 645 972.