

August 2022

What is a Renewable Energy Zone?

The NSW Government has identified five Renewable Energy Zones (REZs) in the New England, Central-West Orana, South-West, Hunter-Central Coast and Illawarra regions of NSW. The REZs bring together investment in renewable energy, storage and transmission infrastructure to deliver reliable, affordable and clean electricity for the people of NSW as coal-fired power stations retire over the next 10 to 15 years.

New England Renewable Energy Zone

New England has some of the best natural energy resources in the country and some of the State's finest potential sites for pumped-hydro development.

The NSW Government is in the early stages of planning a REZ in the New England region, centred around Armidale on the lands of the Biripi, Dainggatti, Nganyaywana, Ngarabal, and Gumbainggir people.

The region has attracted strong investor interest and is close to the existing transmission lines that connect the NSW east coast, Upper Hunter and Queensland. This provides opportunities to increase NSW's energy resilience and to export excess energy to Queensland.

The New England REZ will ensure that the region has a key role in a renewable energy future, powering existing industries and supporting economic growth including emerging technologies, such as green hydrogen.

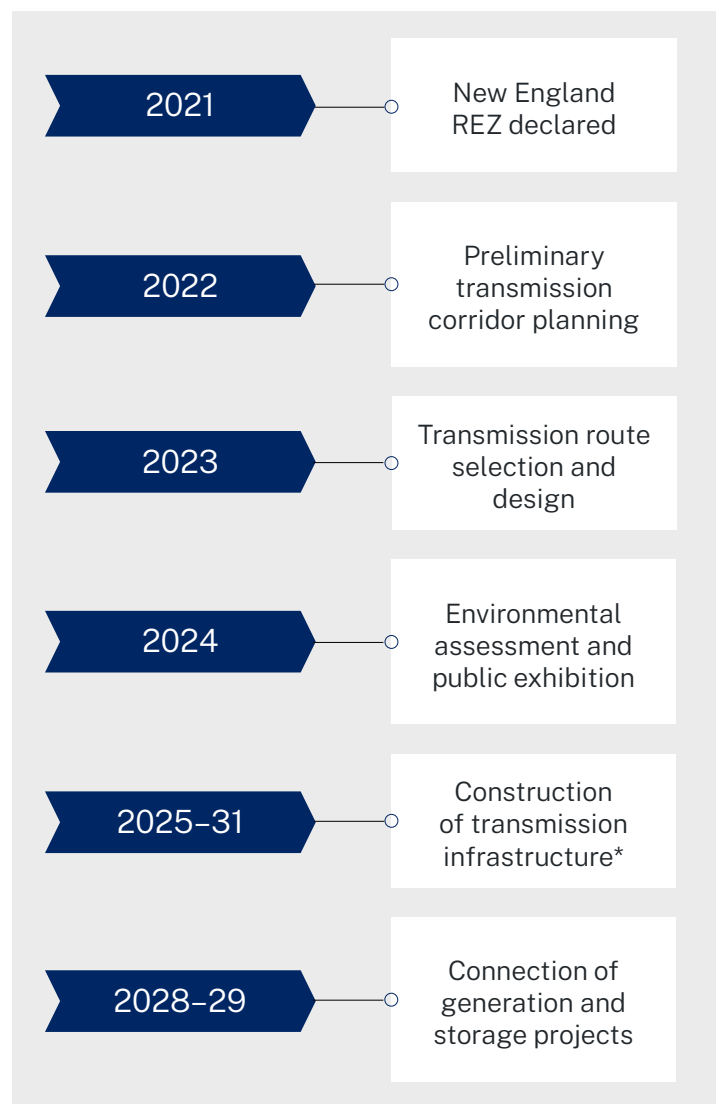
The REZ in New England is expected to:

8GW Have a network capacity of **8 gigawatts**, unlocking new energy generation equivalent to three Bayswater Power Stations.

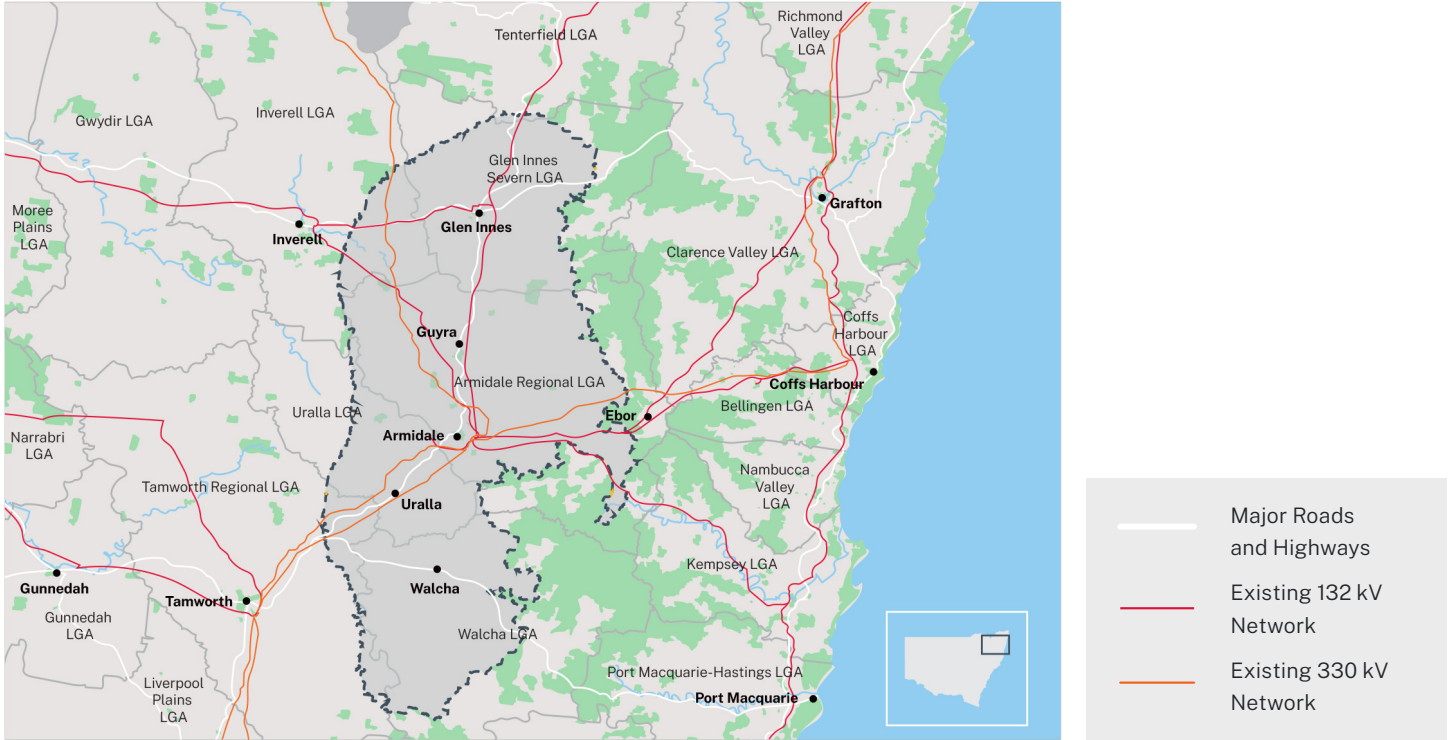
\$ Deliver up to **\$10.7 billion** in private sector investment.

Support around 830 operational jobs and 1,250 construction jobs.

Key milestones

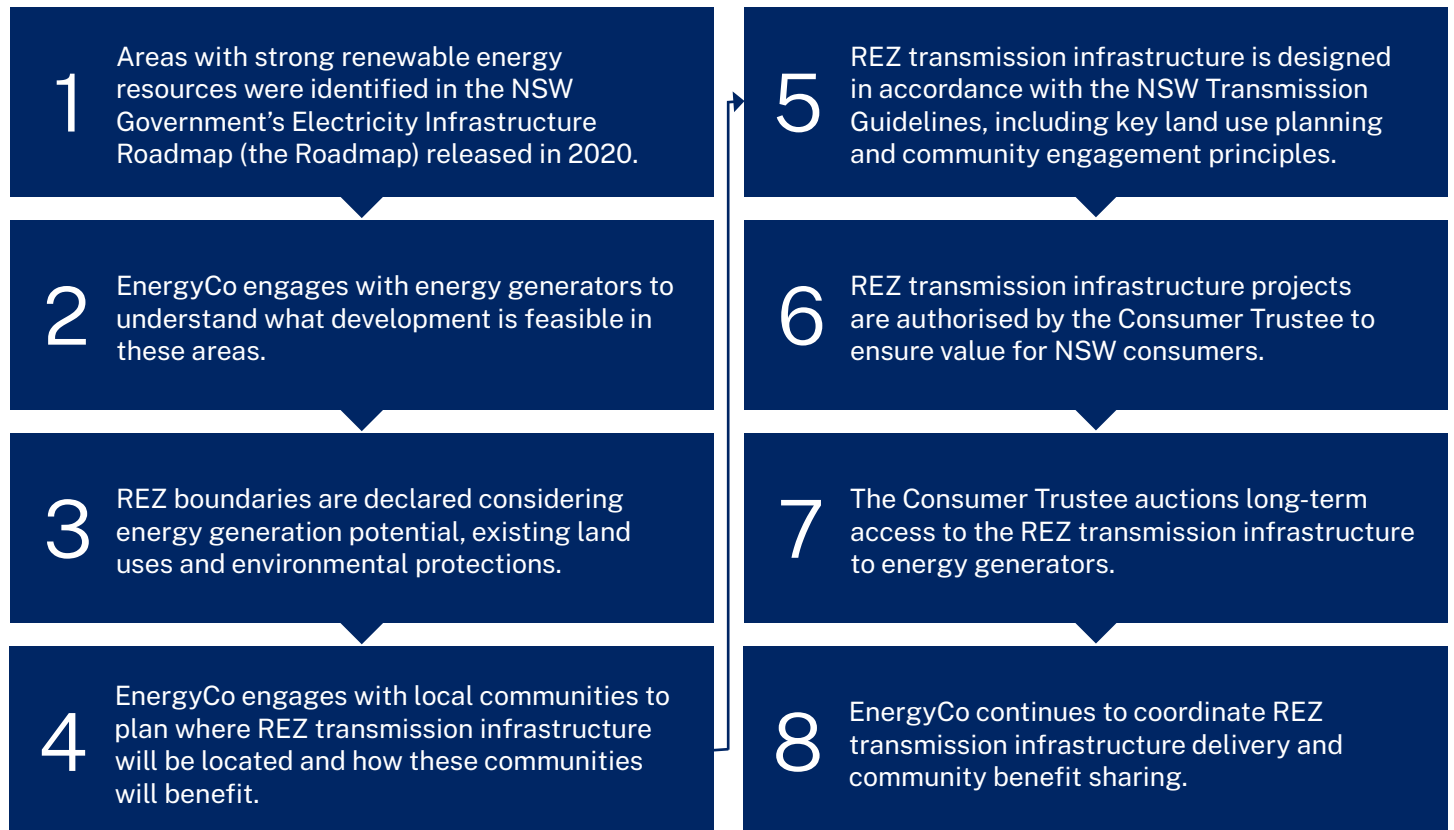


*Transmission infrastructure may be built in stages.



Stylised map of the specified geographical area of the New England REZ.

How is a Renewable Energy Zone developed?



Community engagement

Meaningful engagement with communities is central to REZ development.

We conduct ongoing, on-the-ground consultation with local communities, regional stakeholders and First Nations peoples in the regions that host REZs. Community feedback helps inform coordinated planning to ensure that the REZ and new transmission infrastructure complements existing agricultural and primary-land uses, reflects local priorities, and retains existing economic activity and social values.

Developing the New England REZ will be complex, and the new transmission infrastructure needed to support the REZ will take some years to design and build. New transmission lines will be needed to link substations where new generators and storage projects will connect, and beyond to connect to the 500 kV network in the Hunter.

To ensure that the New England REZ delivers meaningful, long-term benefits to local communities, EnergyCo will be undertaking extensive community consultation throughout the design and delivery of the REZ.

Find out about upcoming events and information sessions in the New England REZ by visiting energyco.nsw.gov.au/get-involved/community-engagement.



Image courtesy of Neil Fenelon, NSW Department of Planning and Environment. People sitting outside a café, Uralla.

About EnergyCo

The Energy Corporation of NSW (EnergyCo) is a NSW Government statutory authority responsible for leading the delivery of REZs as part of the Roadmap.

The Roadmap sets out the NSW Government's vision to coordinate investment in electricity transmission, generation, storage and firming infrastructure and transform the NSW electricity system into one that is cheap, clean and reliable.

As the Infrastructure Planner for delivering the New England REZ, EnergyCo will work closely with communities, investors and industry to coordinate investment in renewable energy generation, electricity networks and storage infrastructure in REZs for the long-term benefit of energy consumers, local communities and industry in NSW.

We are preparing a set of studies to coordinate the impacts of the REZs across a number of areas we've heard are priorities for the community:

Workforce accommodation

We are reviewing how we can provide construction workforce accommodation and services while meeting the needs of local communities and businesses.

Training

We are investigating opportunities to boost the skills of the local workforce and build capabilities in the renewable energy sector.

Roads and traffic management

We are looking at how we can coordinate traffic management and local road improvements within the REZ.

Telecommunication improvements

We are looking at ways to improve mobile connectivity for local communities as we deliver the REZ.

Waste management

We are investigating how we can best support local councils to manage waste during construction.

How will EnergyCo's program benefit NSW?



Economic growth for regional communities

Supporting local jobs and investment, and attracting new industries to regional areas.



Coordinated strategic planning

Complementing existing agriculture and primary land uses, reflecting local priorities and retaining existing economic and social values.



Cheaper and more reliable electricity

Improving the affordability and reliability of electricity for NSW consumers by increasing bulk supply and driving down wholesale electricity prices.



Community benefit sharing

Working with local stakeholders to ensure benefits go towards community and employment purposes that benefit communities in the REZ.



Emissions reduction and clean industries

A clean energy sector will help halve NSW's emissions by 2030 and support economic growth in low-emissions industries such as green hydrogen.



High angle view of solar panels.

Contact us

Website: energyco.nsw.gov.au

Email: contact@energyco.nsw.gov.au



EnergyCo wants to hear what you think about our plans. For more information or to subscribe to our EnergyCo mailing list for regular updates, please scan the QR code or visit energyco.nsw.gov.au.

This material is considered to be true and correct at the date of publication. Changes in circumstances after the time of publication may impact upon the accuracy of the material.