

## Upcoming field work and survey investigations

### February 2026

The Hunter Transmission Project (the project) is a new 110 km overhead 500 kV transmission line between Bayswater and Eraring in the Hunter. Think of it as a super-highway for electricity — moving renewable energy quickly and efficiently from where it's generated to where people live and work. This new link will complete the northern part of NSW's 500 kV “backbone” — connecting the Hunter and Illawarra. By strengthening the grid, the project will unlock renewable energy from the Central-West Orana and New England Renewable Energy Zones, reduce reliance on ageing coal-fired power stations, and provide cleaner, more reliable and affordable energy for NSW.

The project is currently in the planning and approvals stage. Its environmental impact statement (EIS) has been publicly exhibited, and community feedback is now being carefully considered as part of the assessment process.

### What we're doing

As part of planning for the project, EnergyCo will be conducting environmental and ecological surveys throughout February 2026. These include geotechnical investigations, fauna surveys, and Aboriginal heritage assessments:

- Geotechnical investigations use resistivity testing to assess soil and ground conditions for safe, sustainable infrastructure design.
- Fauna surveys employ motion-activated cameras to monitor wildlife in forested areas.
- Aboriginal heritage assessments identify cultural sites with Registered Aboriginal Parties (RAPs) through walkovers, test pits, and salvage to ensure cultural heritage assets are protected.

These checks help design projects that safeguard the environment, respect cultural heritage, and support local land use. While the EIS is an important step, it is not the end of the planning process. Some surveys could not be completed earlier due to seasonal conditions or land access, and route refinements may arise from discussions with landowners. The results of this work will inform any updates or amendments to the EIS and ensure the project reflects both technical findings and community feedback.

### When and where

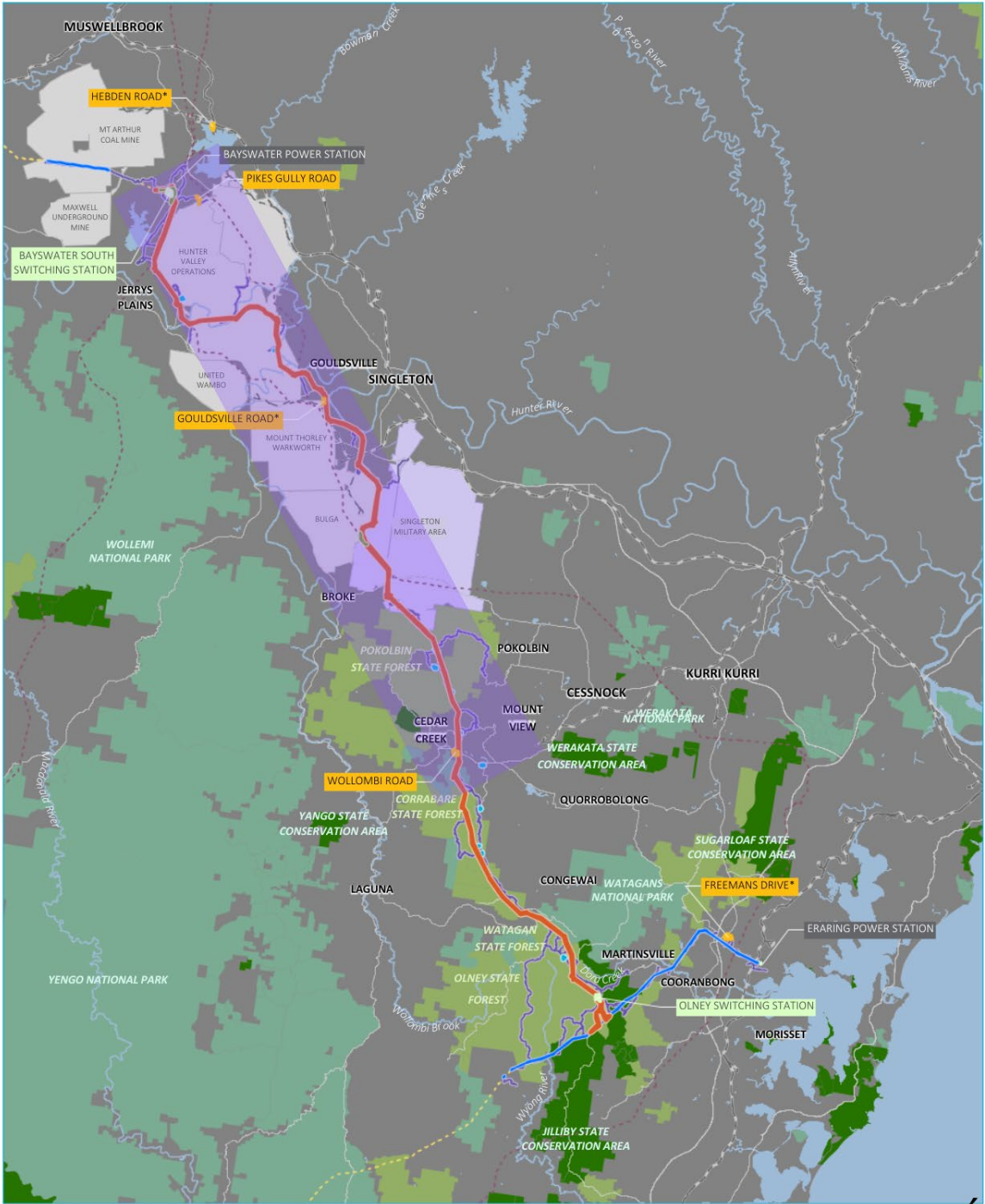
We are planning to carry out surveys in your area. These surveys depend on things like weather, temperature, and when certain animals are active. Some surveys may need to happen at night to observe animals that are only active after dark. We aim to stick to the proposed dates, but sometimes we may need to adjust the timing to follow environmental guidelines and make sure the results are accurate. If we need to access your property, we will always give you at least 24 to 48 hours' notice. Access for residents, school buses, deliveries and emergency services will always be maintained.

### Work hours

- Standard survey hours: **7 am–6 pm, Monday to Saturday**
- No work will occur on Sundays or public holidays. Dates may shift to ensure accurate results and safe working conditions.

## Upcoming surveys (February 2026)

Activity	Locations	Dates	Survey purpose	What you might see
<b>Geotechnical investigations</b>	Proposed study corridor in Mining land.  If access to your property is required for these survey activities, a member of our community team will be in touch with you directly.	Monday 2 February to Friday 27 February 2026	Survey teams will conduct resistivity testing to measure electrical resistance in the ground. This helps identify subsurface conditions such as soil composition and moisture content.	You may notice two light vehicles parked nearby, with 2 field staff using hand tools and cables along the alignment. Workers will be wearing high-visibility clothing and may walk the alignment with a recording device.
<b>Fauna surveying</b>	Proposed study corridor in Watagan State Forest, Pokolbin State Forest and Olney State Forest.	Monday 23 February to Friday 27 February 2026	Camera monitoring for identifying fauna species	Teams collecting motion activated cameras placed in December 2025 in locations to identify active fauna in areas.
<b>Aboriginal heritage test pit surveying</b>	Proposed study corridor in Mining land and private properties.  If access to your property is required for these survey activities, a member of our community team will be in touch with you directly.	Monday 2 February to Friday 27 February 2026	Identifying and recording Aboriginal cultural heritage sites, with Registered Aboriginal Parties (RAPs) involved in walkovers, test pits and salvage so they can be protected in project planning.	Small survey teams on foot or in light vehicles, staff in high-visibility clothing, hand tools, and traffic signage in some areas.
<b>Land surveying</b>	Proposed study corridor in state forests, industrial land, mining land and private properties.  If access to your property is required for these survey activities, a member of our community team will be in touch with you directly.	Monday 2 February to Friday 27 February 2026	Mapping property boundaries and ownership to confirm land details.	Small survey teams on foot or in light vehicles, staff in high-visibility clothing using hand tools.
<b>Ausgrid easement investigations</b>	Ausgrid 132kV easement within the study corridor.  If access to your property is required for these survey activities, a member of our community team will be in touch with you directly.	Monday 2 February to Friday 27 February 2026	Ground level visual inspection and photography to assess for cracks, splits, wear and general condition.	Small survey teams on foot or in light vehicles, staff in high-visibility clothing, hand tools, and traffic signage in some areas.



- Project impact area

  - HTP corridor
  - Switching station
  - Construction support site (\*with temporary worker accommodation)
  - Laydown area
  - Adjustment to existing transmission line
  - Upgrades to existing transmission line
  - Access track
  - Surveying and Aboriginal heritage, geotechnical, Ausgrid 132kV easement investigations
- Existing environment

  - Power station
  - 330 kV transmission line
  - 500 kV transmission line
  - Railway
  - Major road
  - Named watercourse
- Named waterbody
  - NPWS reserve
  - State conservation area
  - State forest
  - Defence
  - Mining

### Surveying species

Some animals, like koalas and gang-gang cockatoos, can only be identified at certain times of year or at night when they are active. Seasonal surveys give accurate information about where these species live and feed, helping the project team understand the environment and manage potential impacts.

### What happens if something is found during surveys?

If surveys find a vulnerable species, sensitive habitat or an Aboriginal cultural item, our role is to protect and manage it in line with NSW legislation and best practice.

What we will do:

- Record and assess what is found.
- Identify ways to reduce impacts where possible.
- Comply with legislation to protect cultural heritage and threatened species.

This ensures the project is delivered responsibly while respecting culture and the environment.

#### Temporary beekeeping site closures



Some existing beekeeping sites in state forests are temporarily unavailable during construction.

These will be reopened once construction is complete, in consultation with Forestry Corporation and the Department of Primary Industries.

### How we're managing impacts

- **Non-invasive surveys** – no clearing of vegetation or permanent changes.
- **Property access** – where access is needed, landowners will receive **24–48 hours' notice**.
- **Safety** – survey teams will work under approved safety protocols and stop work in unsafe weather.
- **Environment** – surveys are timed to meet environmental guidelines and minimise disturbance to local species and habitats.

*EnergyCo is the NSW Government statutory authority delivering the Hunter Transmission Project, a critical part of transitioning to a cleaner future under the Electricity Infrastructure Roadmap.*

### Contact the Community Team

If you have questions or concerns, our Community Team is here to help.

**Email:** [htp@energyco.nsw.gov.au](mailto:htp@energyco.nsw.gov.au)

**Phone:** 1800 645 972 (9am–5pm, Monday–Friday)

**Website:** [energyco.nsw.gov.au/htp](http://energyco.nsw.gov.au/htp)

**Scan the QR code for access to the website:**

